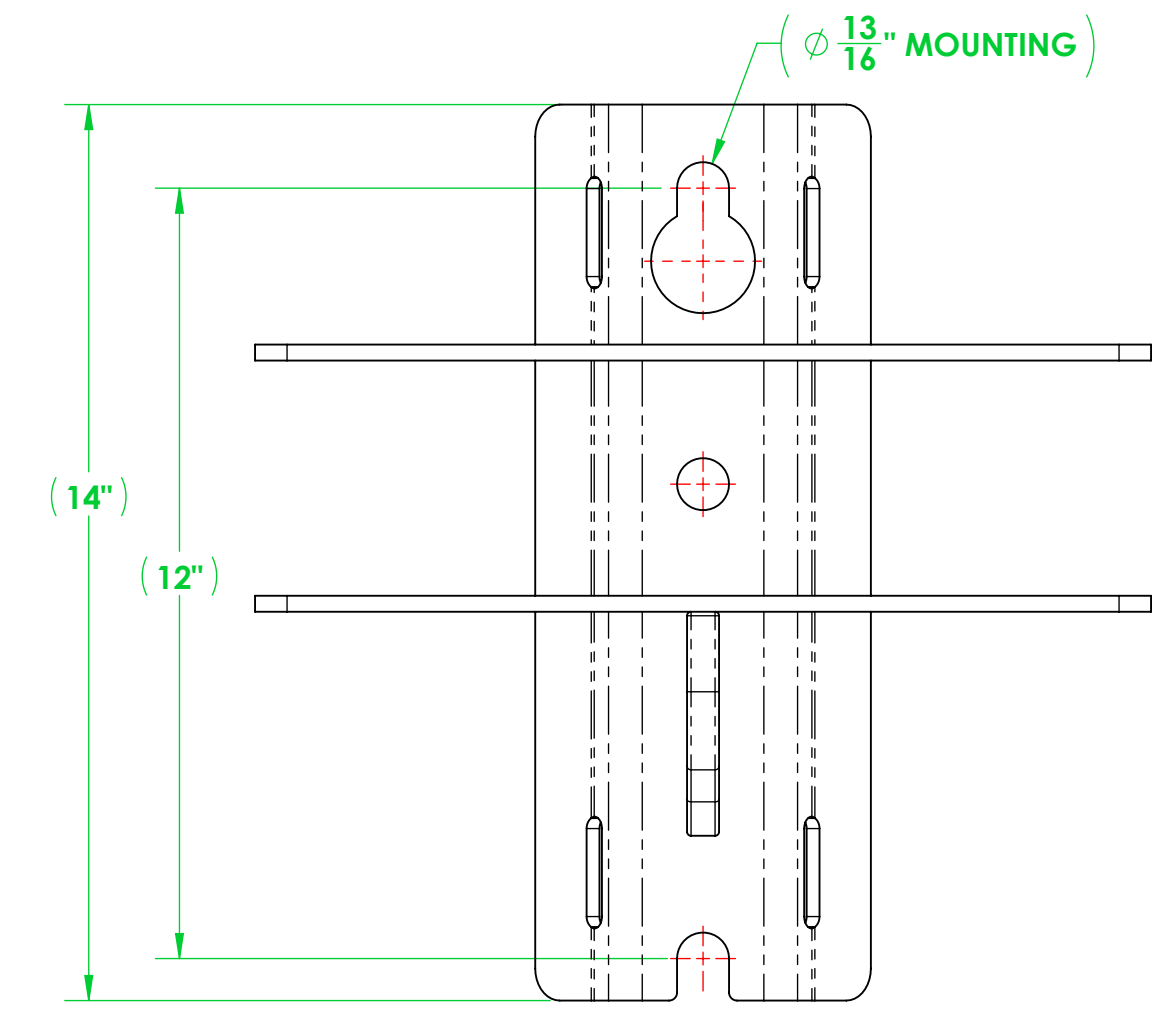
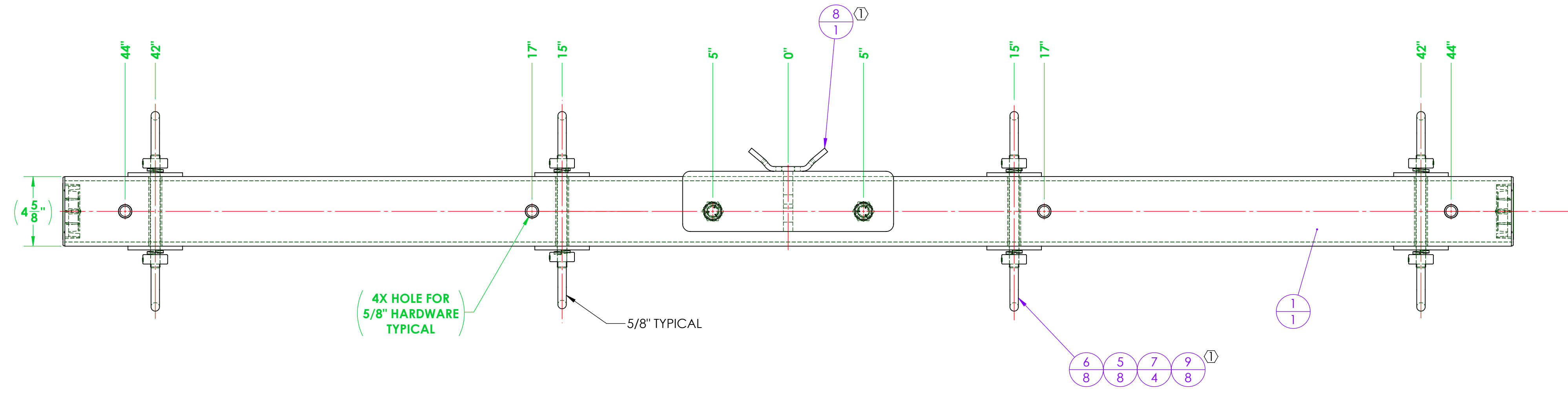
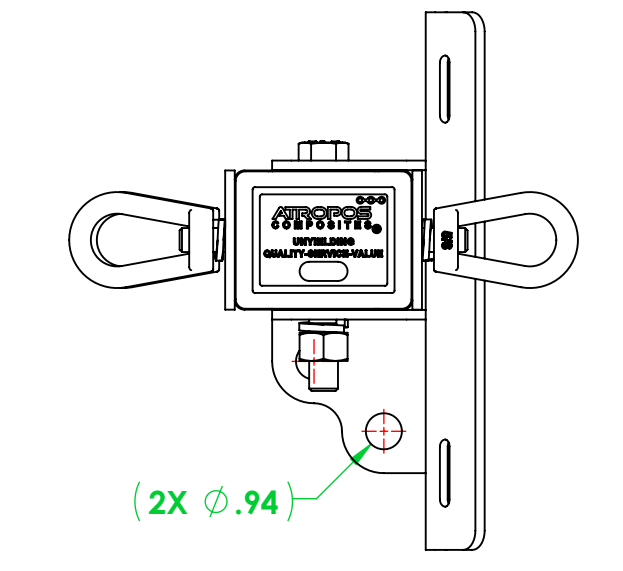
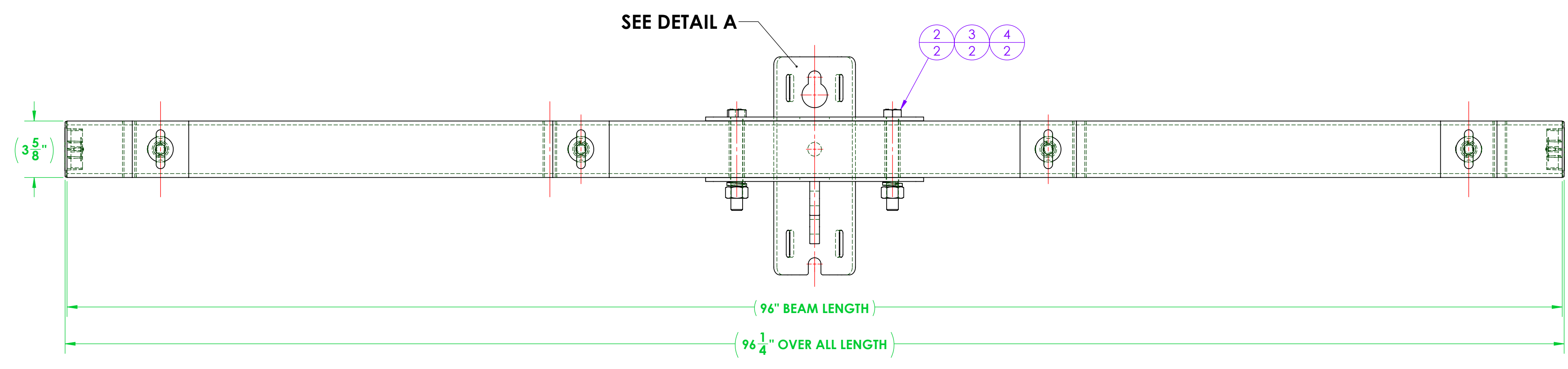


REVISIONS			
REV.	DESCRIPTION	DATE	APPROVED
1	MOUNTING BRACKET WAS FABRICATED NOW PURCHASED. PLATE WASHERS WERE FABRICATED NOW PURCHASED.	4/17/2026	F. BRYANT



DETAIL A



ITEM NO.	PART NUMBER	DESCRIPTION	QTY.
1	3402A096-D312-4910 CA	ASSEMBLY, 3402 DEADEND CROSSARM, 8'	1
2	A616-0020-02	BOLT, HEX, 3/4"-10 X 6.00" LONG, HOT DIPPED GALVANIZED STEEL, 1-1/8" DRIVE	2
3	A616-0042-01	LOCK WASHER, FOR 3/4" SCREW, 0.766" ID, 1.265" OD, 0.188" THICK, HOT-DIPPED GALVANIZED STEEL	2
4	A616-0019-02	EXTREME STRENGTH NUT, HEX, 3/4"-10, 2H, HOT-DIPPED GALVANIZED	2
5	A616-0042-02	LOCK WASHER, FOR 5/8" SCREW, 0.641" ID, 1.073" OD, 0.156" THICK, HOT-DIPPED GALVANIZED STEEL	8
6	A616-0017-02	EYENUT, 5/8"-11, GALVANIZED STEEL	8
7	A711-0044	ALL-THREAD, 5/8"-11 X 7.50" LONG, GALV. STEEL	4
① 8	A700-0044	CROSSARM MOUNTING BRACKET, DEADEND, 3400 SERIES	1
① 9	A700-0049	WASHER, SQUARE, 3.625" X 3.625" X 0.25 THICK WITH 0.66 THRU HOLE	8

<b>GENERAL NOTES</b> UNLESS OTHERWISE SPECIFIED: DIMENSIONS ARE IN INCHES STANDARD TOLERANCES: FRACTIONAL: ±1/32 ANGULAR: ±0.5° BEND: ±2° TWO PLACE DECIMAL: ±0.03 THREE PLACE DECIMAL: ±0.005 INTERFERENCE GEOMETRIC TOLERANCING PER ANSI Y14.5 MATERIAL: FINISH: DO NOT SCALE DRAWING	NAME: F. BRYANT DATE: 10/16/2025 CHECKED: ENG APPR: MFG APPR: Q.A.:	TITLE: <b>ASSEMBLY, DEADEND, 3402, (4) WIRE, 8 FT.</b>
	THE INFORMATION CONTAINED IN THIS DRAWING IS THE SOLE PROPERTY OF VETLURIO. ANY REPRODUCTION IN PART OR AS A WHOLE WITHOUT THE WRITTEN PERMISSION OF VETLURIO IS PROHIBITED.	SIZE: DWG. NO. <b>D3402A096-D312-4910</b> REV 1 SCALE: 1:8 WEIGHT: 77.36 SHEET 1 OF 1